

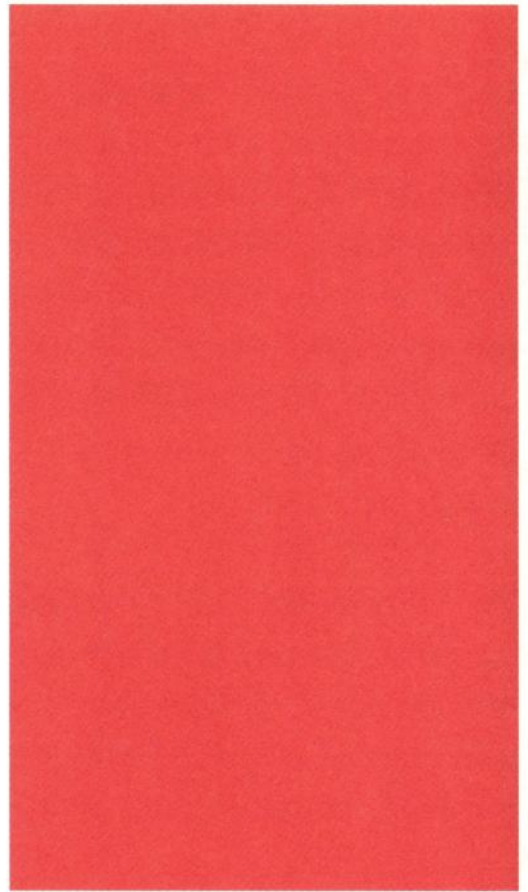
Annual Review:
International
Stainless Steel
Forum



for their success at minimizing energy consumption. The aim will be to spread this information throughout the ISSF membership so that all members can work to reduce the environmental impact of the stainless steel industry on the world.

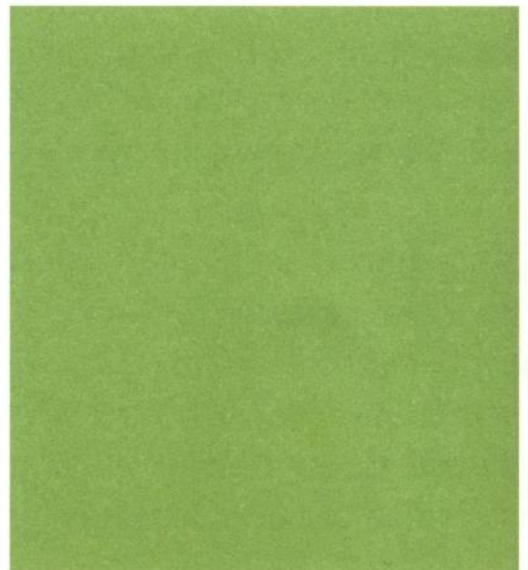
New Global Life Cycle Data

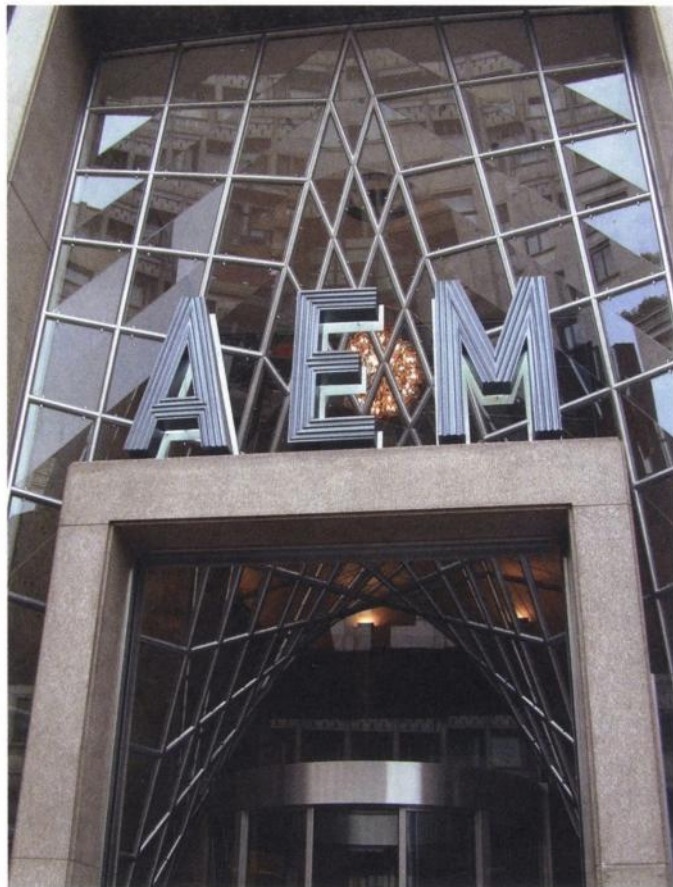
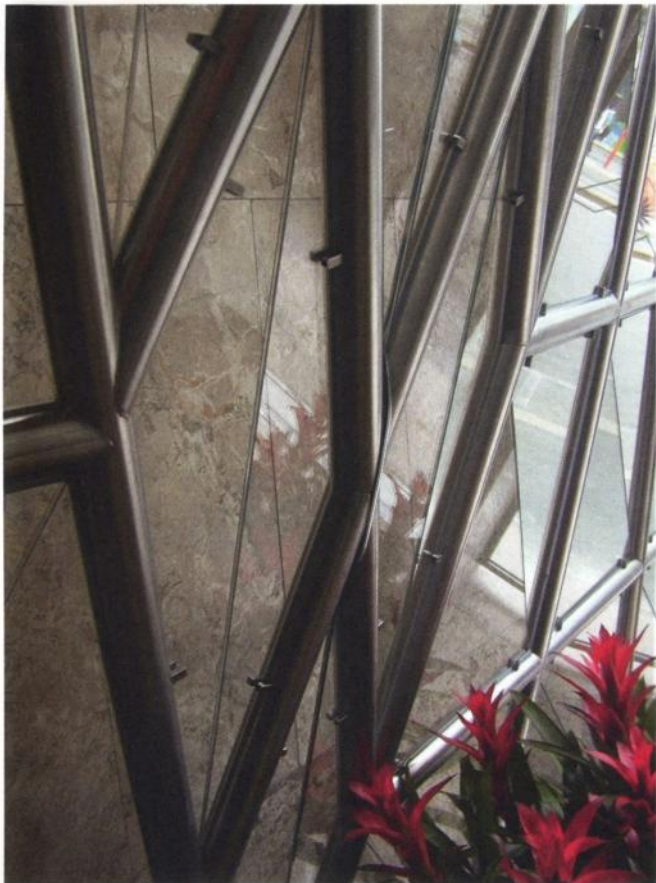
Stainless steel companies in Europe and Japan have been collecting new Life Cycle Inventory (LCI) data over the past year. During 2009, ISSF will utilize this data to create a new set of global LCI data for stainless. A new methodology has been used to collect the data and will be used when it is modelled by ISSF. The new data will be used within the stainless industry and by stainless steel users to accurately determine the environmental impact of our products and processes.



**BRIGHT
SPARKS**

Centro Inox, Italy





Milan's Municipal Electric Company (AEM) has demonstrated its growth and success with the addition of a new stainless steel entrance hall at its historic head office in central Milan. The new entrance hall sums up AEM's history, innovation and progress.

The plastic nature of the shape and the choice of technologically advanced materials such as stainless steel and high-strength glass convey the modernisation of AEM. The new structure integrates beautifully into the existing 1950s architecture and the local environment.

